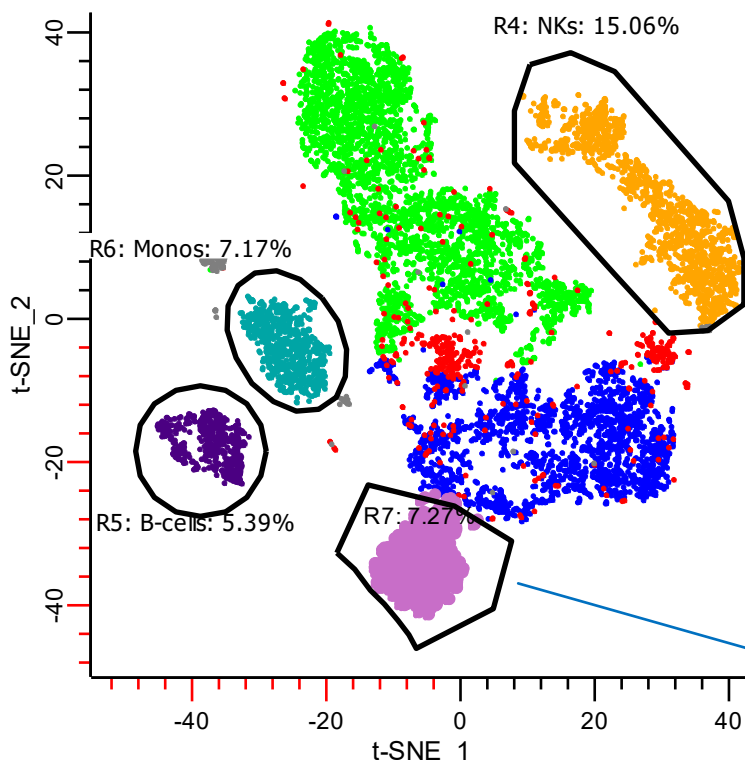


WinList 3D™ 9.0



WinList™ is designed to be efficient and accurate, while offering unparalleled power for your data analysis. With publication-quality graphics, options for compliance or research modes, automated compensation, batch processing, 3D graphics and so much more WinList has a proven track record as a cornerstone analysis program of major labs world-wide. Read-on for some new features and highlights!!

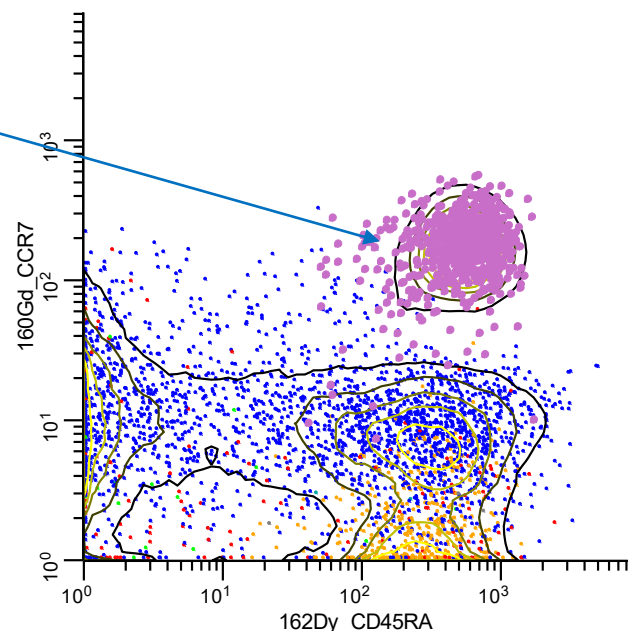


New Features!

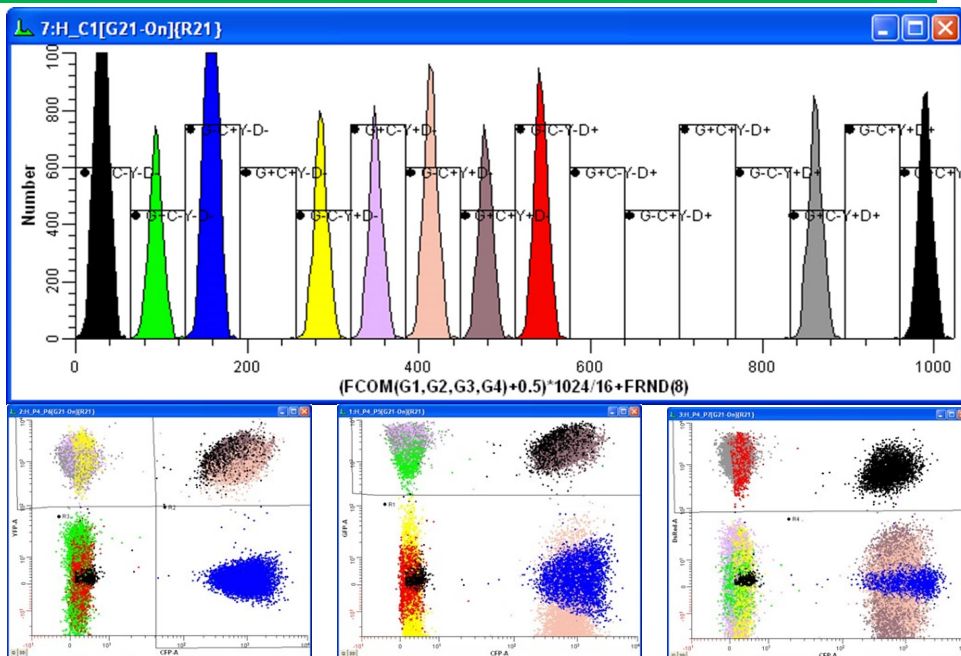
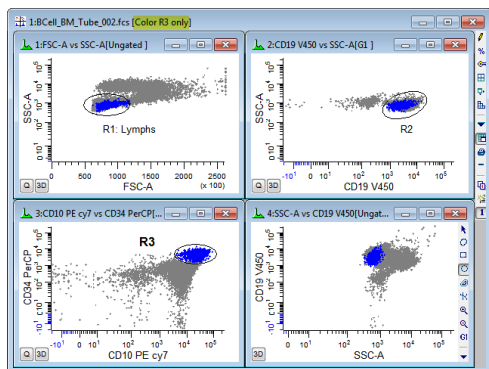
- ◆ t-SNE
- ◆ Contour regions and Sticky regions
- ◆ File merging
- ◆ Hyperbolic Sine and Vlog transforms
- ◆ "Highlight the region" mode
- ◆ Enhanced calculated parameters
- ◆ Parameter statistics for gates
- ◆ Stress-tested: multiplexing assay with >2500 regions and 25 pages of analysis
- ◆ Compliance mode

WinList now incorporates the t-SNE algorithm into its analysis machinery. A clever wizard will help you set up your t-SNE analysis for any number of markers, with or without a gate. Two-way region highlighting allows you to quickly and easily identify populations. Turn on the animation and see your events of interest in all dot plots. Versatile coloring features are editable.

To top it off— set up a 3 parameter t-SNE and see it in 3D. It makes a great graphic for a presentation or to drive further analysis.

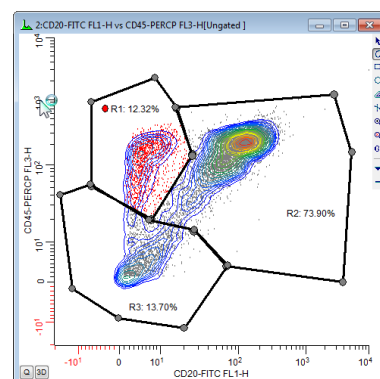
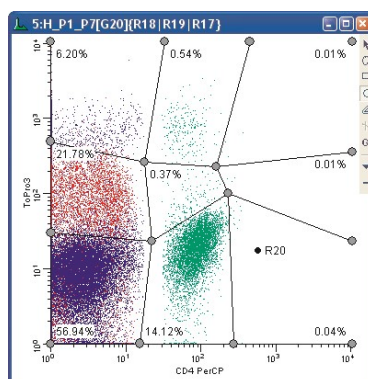


Draw a region around a t-SNE cluster, highlight the events and view events in all dot plots. The region shown above is the CD8+ Naïve population with CCR7+CD45RA+ events highlighted.

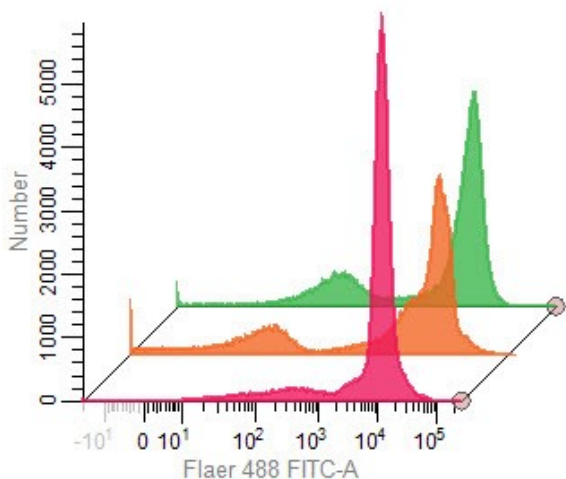


F-COM helps you present and quantify phenotyping results for multi-parameter data.

Flexible coloring options include color by region only (top) or color by gate hierarchy. You can refine the coloring to show the rare events on top (bottom). Cool.



Special gating modes allow you to define and enhance your populations and events of interest. **NSTAT regions** define any number of rows and columns without rectilinear limitations. The new **"Sticky Nodes"** feature links the vertices of regions. When you move one the vertex in the other will also move—no tedious redrawing necessary.



Overlays are easier than ever. Click insert— drag and drop your histograms of interest . The overlay window lets you adjust the angle and change the labeling and you are done. Publication worthy.

Verity Software House

45a Augusta Rd
Topsham Maine 04086
www.vsh.com

Phone: 207.729.6767
Fax: 207.729.5443
E-mail: verity@vsh.com