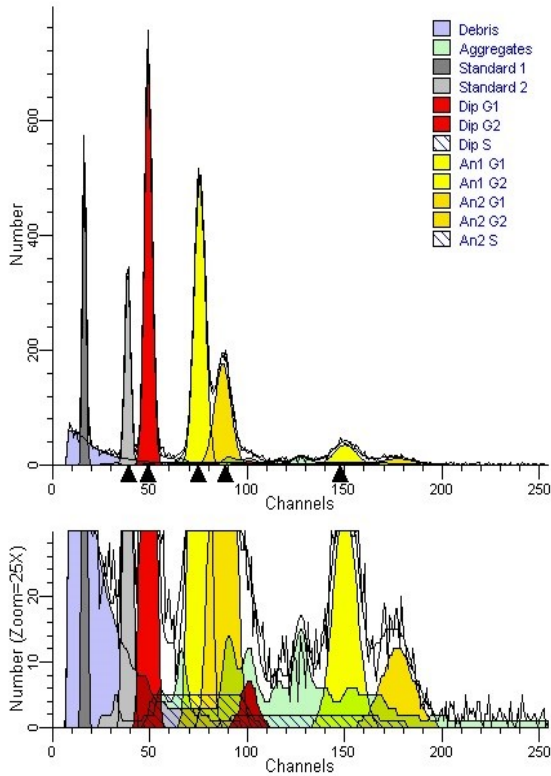


ModFit LT™ 5.0



File analyzed: MyFile.fcs
 Date analyzed: 12-Dec-2007
 Model: 3DA2n_DSD_AnF_ASF
 Analysis type: Manual analysis

Ploidy Mode: First cycle is diploid

Diploid: 37.91 %
 Dip G1: 90.76 % at 49.26
 Dip G2: 1.92 % at 100.99
 Dip S: 7.32 % G2/G1: 2.05
 %CV: 4.04

Aneuploid 1: 40.09 %
 An1 G1: 87.56 % at 75.46
 An1 G2: 12.44 % at 150.13
 An1 S: 0.00 % G2/G1: 1.99
 %CV: 3.80 DI: 1.53

Aneuploid 2: 22.00 %
 An2 G1: 82.11 % at 87.39
 An2 G2: 11.03 % at 176.88
 An2 S: 6.87 % G2/G1: 2.02
 %CV: 4.74 DI: 1.77

Total Aneuploid S-Phase: 2.43 %
 Total S-Phase: 4.29 %
 Total B.A.D.: 9.58 %

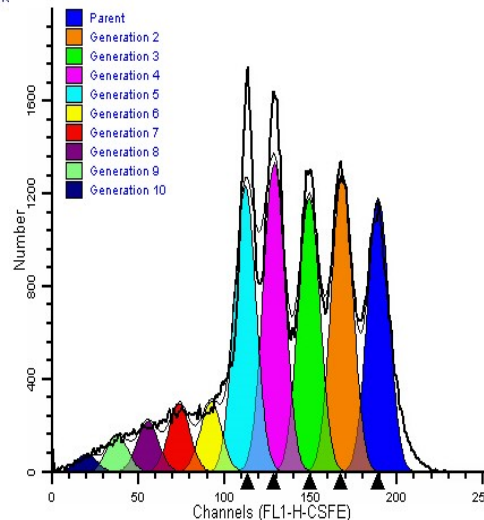
Std 1: 7.84 % at 16.31 DI: 0.33
 Dip G1 Ratio: 3.02 %CV: 4.31
 Std 2: 9.35 % at 38.60 DI: 0.78
 Dip G1 Ratio: 1.28 %CV: 3.71

Debris: 8.38 %
 Aggregates: 6.51 %
 Modeled events: 14775
 All cycle events: 10249
 Cycle events per channel: RN
 RCS: 1.706

ModFit™ is designed to be efficient and accurate, while offering unparalleled power for your data analysis. With publication-quality graphics, options for compliance or research modes, batch processing, and so much more, ModFit has a proven track record as a cornerstone analysis program of major labs world-wide. With robust applications for ploidy-based cell-cycle analysis, proliferation analysis with cell-tracking dyes, and perturbed cell-cycle modeling, it is, simply, the industry standard. Intuitive wizards help guide you through analysis, while sophisticated databasing calculates statistics and equations automatically. Read-on for some new features and highlights!!

New Features!

- ◆ **unrestricted gating ability**
- ◆ **log like transforms**
- ◆ **multiple select for editing graphics**
- ◆ **improved user and model equations allows for more customized analysis results**
- ◆ **report equations now editable**
- ◆ **compliance mode with enhanced logging**
- ◆ **enhanced text editing**
- ◆ **custom equations can now be added to DB and or report**
- ◆ **new stats for Cell-Tracking analysis**
- ◆ **graph showing the “residuals” or data not accounted for by the model.**



Proliferation Wizard Basic Model

File: ab#28 CSFE Norm 72h.011
 Date acquired: 25-Oct-01
 Date analyzed: 12-Dec-2007

Parent: 16.20 % at 189.00

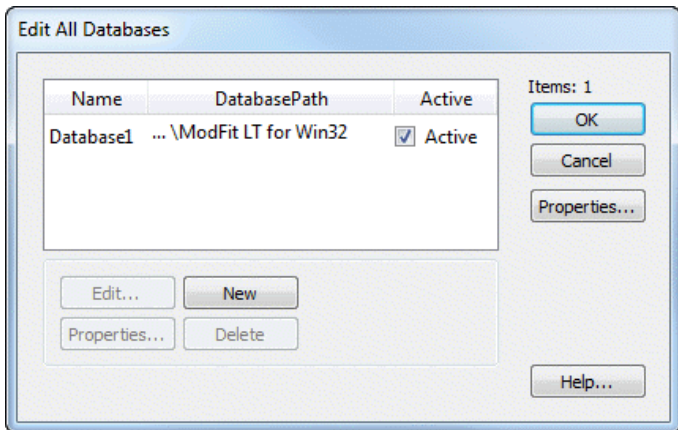
Generation 2: 17.54 % at 168.06
 Generation 3: 16.29 % at 148.97
 Generation 4: 18.38 % at 128.73
 Generation 5: 16.96 % at 111.96
 Generation 6: 4.22 % at 92.13
 Generation 7: 4.08 % at 73.67
 Generation 8: 3.05 % at 55.59
 Generation 9: 2.22 % at 37.82
 Generation 10: 1.06 % at 19.80

Proliferation Index: 3.06
 Nonproliferative Fraction: 0.50
 Division Error Index: 1.00
 Spacing of generations: 20.94

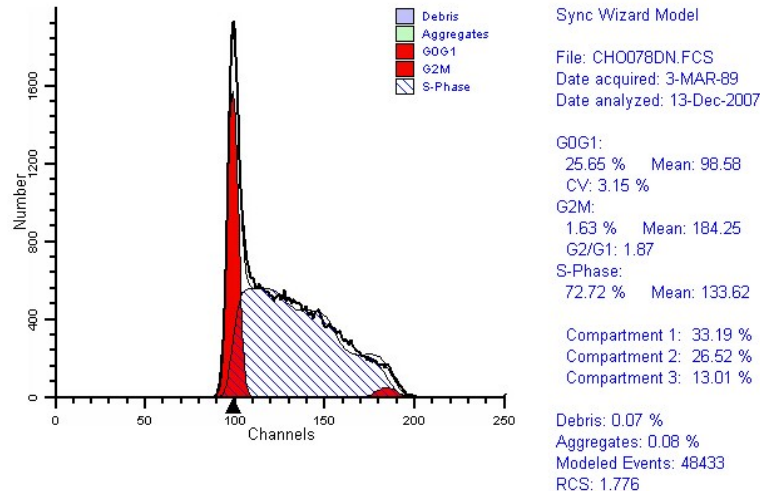
For cells at generation >= 3:
 Upper Generation P.I.: 8.65
 Precursor Frequency: 0.234806

Number of Cells Analyzed: 116834
 Reduced Chi-Square: 14.355

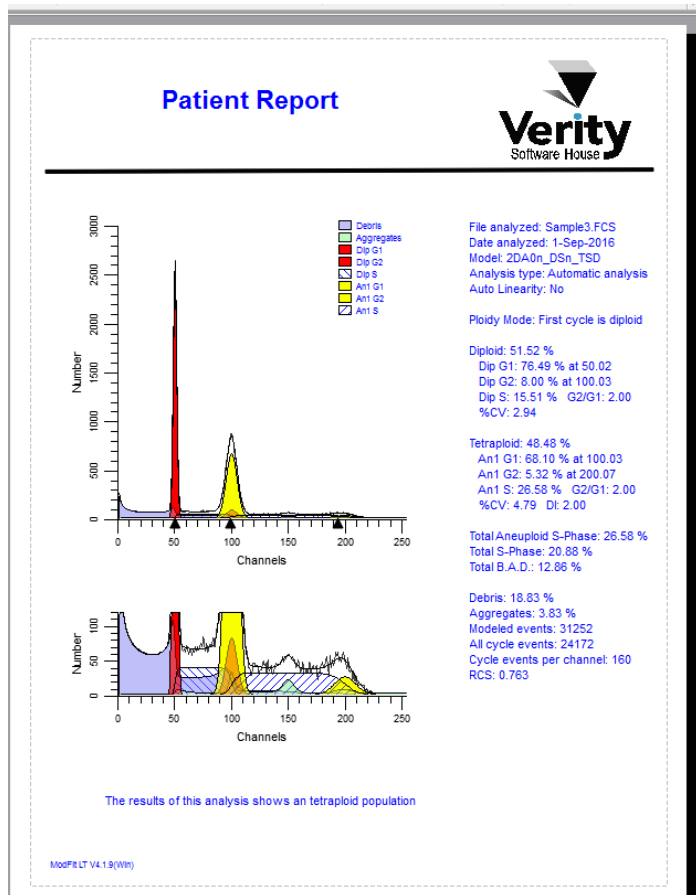
Wizard for Guided Cell-Tracking Analysis



ModFit LT can have one or more databases defined at any time. The database is in ASCII-formatted, tab-delimited format making it easy to drop into Excel or other statistics programs. Any FCS keyword or analysis result can be mapped to a database field, including user defined equations.



ModFit's Sync Wizard is a powerful tool to help you with blocking and drug discovery experiments. Designed to analyze samples with perturbed S-phase or G2/M populations, you can choose the shape and number of S-phase compartments, or go with default values. Save your analysis as a template and batch analyze any number of samples.



ModFit Features a Customizable Report Page

From letterhead graphics to text, ModFit LT imports from the clipboard everything you need to create your own reusable report templates. Save your custom reports with all of the formatting, analysis information, gating histograms and other elements you need. Batch processing allows you to automatically save a unique report for each sample file starting with your custom report template. You can even make the report read-only for added security. Quick, easy, efficient, accurate.

Verity Software House

45a Augusta Rd
Topsham Maine 04086
www.vsh.com

Phone: 207.729.6767
E-mail: verity@vsh.com